

[ANNKE | Help Center](#) > [FAQs](#) > [Young/Soter/Egis DVRs and DVR Kits](#)

Search



Articles in this section



Annke Vision - Another way to unlock system



Andy

2 months ago · Updated

Follow

Applies to:

DT41Y/DT61Y/DT81Y/DN41R/DN61R/DN81R/DT41GB/DT81GB
/DT61GB/DW41JD/DW81KD/DW61LD/DT81DP/N48PI/N44PI/N46PI
/N44PAM/N48PAW/N46PCK/N88PCH/N48PBB

Purpose: If you could not find the long SN serial number from your system, please refer to this instruction to reset the password of your system.

Steps:

1. Plug DVR/NVR to the router by ethernet cable.
2. Get a windows computer that is connected to the **same router**. Install software. Here is the software download link:

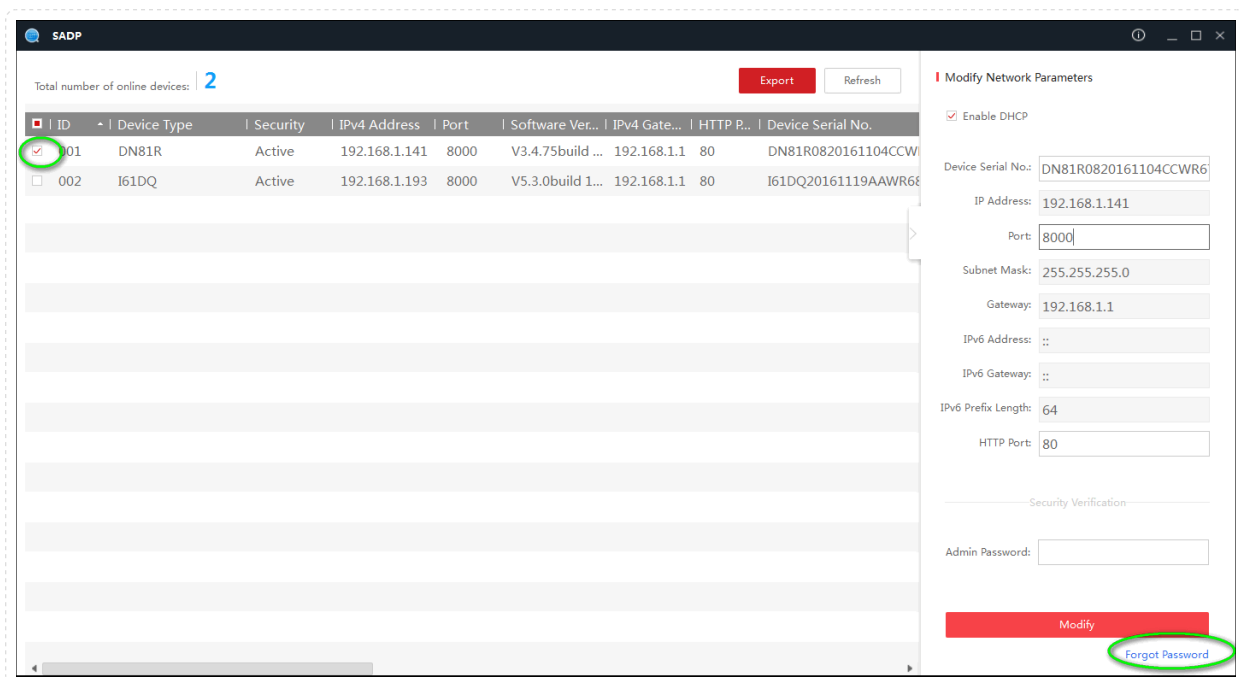
For Windows: https://download.annke.com/document/Computer_Software/SADPToolV3.0.3.3.zip

Support

For Mac: https://download.annke.com/document/Computer_Software/SADPTool.pkg.zip

3. Run the software and it will detect the system's IP.

4. Select the camera's IP and click **Forgot Password** at the right bottom of the software.



1 Step 1: Click Export to download the key request file (XML file) or take a photo of the QR code. Send the XML file or QR code photo to our technical engineers.

2 Step 2: Input the key or import the key file received from the technical engineer to reset the password for the device.

☒ Input Key ☐ Import File

New Password:

Confirm Password:

☐ Reset Network Cameras' Passwords

Confirm **Cancel**

5. Click export and select the path to export a file. Please **don't change** the file's name and send this file to **support@annke.com**.



We will send you a key file to unlock the system.

NOTICE:

1. Please do NOT turn off your DVR and the SADP software after you exported the files. Otherwise, the exported file will be invalid immediately.
2. Please use the key file from us as soon as possible because it's only valid for 24 hours.

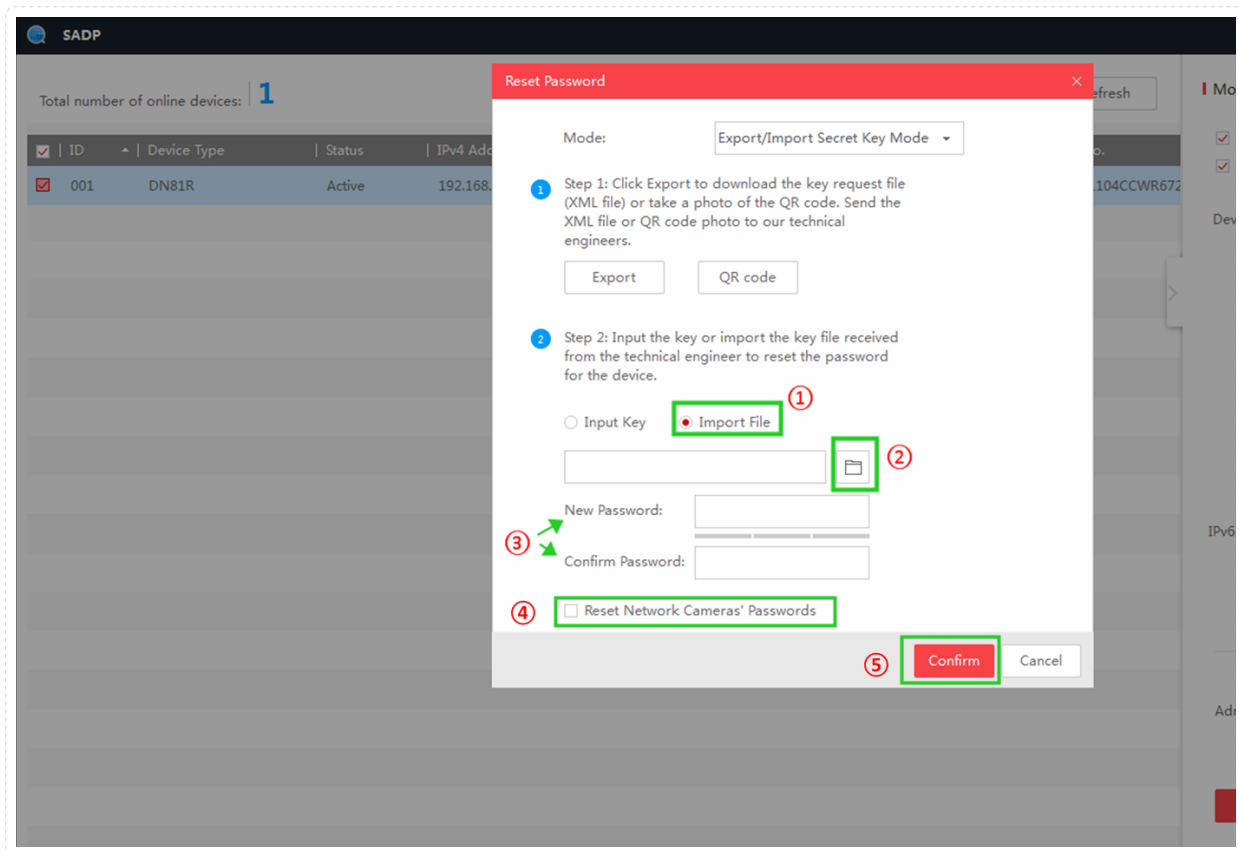
By the way, please send us a picture of the white label of your system/camera. You can find it underneath the recorder. Please refer to this picture to find it.

We need to verify the SN and the model number. It is important to get the correct file.



6. Select "**Import File**" and choose the file we sent to you.
Input your DVR/NVR's new password in "New Password" and "Confirm Password", tick the option "Reset Network Cameras' Passwords", click "Confirm" to finish reset.

Note: Before doing step 6, please connect as many cameras to the NVR as possible, since only the connected cameras' password can be reset together with NVR's.



Was this article helpful?

✓ Yes

✗ No

50 out of 205 found this helpful

Have more questions? [Submit a request](#)

Return to top ↑

Related articles

Annke Vision - What to do if you forgot the system's password?

[All Solutions - Troubleshooting--What can you do if you forget DVR/NVR password?](#)

PRODUCTS

[C800 4K PoE Camera](#)

[Annke Vision - Restoring Default Settings on Annke DVR/NVR](#)

[NC400 Color Night Cam](#)

[Annke Sight - What to do if you forgot password of system?](#)

[H800 8MP HD Kit](#)

[How to Reset the Camera to Factory Default on DVR?](#)

[BK200 Detectant Cam](#)

[S500 5MP PIR System](#)

[F800 4MP 360° Fisheye Image Kit](#)

[AZ500 Zoom Security Camera](#)

[AZ500 Zoom](#)

SUPPORT

[Help Center](#)

[Track Your Order](#)

[Download Center](#)

[Product Registration](#)

[Payment Method](#)

[Warranty & Return](#)

[Shipping & Delivery](#)

Comments

MORE is closed for comments.

Refurbished

For Business

Partner Program

Love & Secure Prog.

Affiliate Program

DIY Your Camera Color

[NightChroma Top-Tech](#)

CALL US

+1 833 717 0187

Free in US & CA

Toll Calls in Other Countries

8 am - 8 pm, EST, Weekday

10 am - 6 pm, EST, Weekend

*email



Copyright © 2020 ANNKE | Help Center. All Rights Reserved.

[PRIVACY POLICY](#)

[TERMS & CONDITIONS](#)

[DISCLAIMER](#)

